

LET'S PLAY HOUSE PROJECT IDEA: Out to Lunch Door Hanger



The instructions in this file are given for EQ6, EQ7, or EQ8 users who own the My Dream House Collection. You must have this library installed to be able to access and edit the blocks, as instructed in this project file.

These instructions refer specifically to EQ6, but are also applicable to EQ7 or EQ8, with minor changes in terms of tabs and menu items. If necessary, use your reference manual for additional guidance.

Setting up

- 1 Open EQ6 and click the **Open an existing project** tab.
- 2 Click the folder icon on the bottom left (Click here to open a project not listed above) to navigate to the folder where your MDH project files are located. Find the **MDH_Door Knob Hangers** file and open it.
- 3 Depending on where you closed last time, the block or quilt worktable will appear.
- 4 Click the View Sketchbook icon. Click the **Quilts** tab.
- 5 Select the second project: *Sewing Room*.
- 6 Click the **Edit** tab to open the project on your quilt worktable. Click on the Layer 2 tab. With the Adjust tool select all the motifs and delete them, leaving the bare door hanger.
- 7 Let's go now to the **Block Library** now to find the motif we will be using for this project.



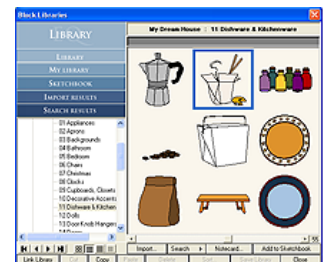
4-5



6

Finding and editing the block

- 1 On the main menu, click Libraries > Block Library.
- 2 Scroll down to the My Dream House Library and select: **11 Dishware & Kitchen**. Select the "Chinese Takeout" block and click **Add to Sketchbook**. Then click **Close**.
- 3 Click the View Sketchbook icon. Click the Blocks tab and then the Motifs tab. Find the Chinese Takeout block and select it - open it up on the Sketchbook.
- 4 You will now have to edit this block a little to make it fit on the doorhanger. Select the fortune cookie patches and move them to the left side of the box. You will probably also want to move the "steam" down further into the box, or delete it altogether.
- 5 Color your block and Add to Sketchbook.



1-2



3-4



Setting the block

- 1 Back on the quilt worktable, click the **Layer 2** tab.
- 2 Set the Chinese Takeout motif on the right side of the door hanger (click and drag). Adjust the size to 3.000 x 3.000.
- 3 Add the text: Using the text tool, click and drag to start a text block. Write the word "Out." The font used in my example is Chinese Takeaway and the size is 1.00. You should feel free to play with any other font you like.
- 4 Write the other words: one box for each word - "To" and "Lunch".
- 5 Color the door hanger with whatever fabrics you like. If necessary, go to your Fabric Library for additional fabrics.
- 6 **Save to Sketchbook**.



The use of these instructions is limited to individual and personal use. Sharing or distributing this file in any form is not allowed. It may not be used for commercial purposes, unless written permission is granted. ©Angela Padilla, 2009. All Rights Reserved.