

## LET'S PLAY HOUSE PROJECT IDEA: NEW BABY

*The instructions in this file are given for EQ6, EQ7, or EQ8 users who own the My Dream House Collection. You must have this library installed to be able to access and edit the blocks, as instructed in this project file.*

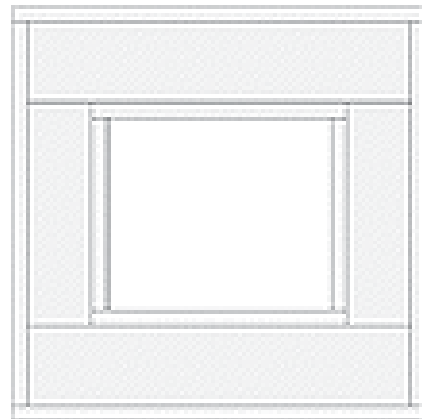


*These instructions refer specifically to EQ6, but are also applicable to EQ7 or EQ8, with minor changes in terms of tabs and menu items. If necessary, use your reference manual for additional guidance.*

### Setting up the quilt

- 1 Open EQ6 and click the **Create a new project** tab.
- 2 Type the name of your project (for example, MDH\_baby) and click **OK**.
- 3 Depending on where you closed last time, the block or quilt worktable will appear.
- 4 Let's begin by setting up our quilt layout. If you are not already on that worktable, click the quilt icon.
- 5 On the main menu, click **Quilt > New Quilt > Custom Set**.
- 6 Click the **Layout** tab on the left bottom of the screen. Set the size of the center rectangle to: **Width = 14** and **Height = 12**
- 7 Click the **Borders** tab. For the Border Style select Long Horizontal. Set the size to 1.00
- 8 Click the Add tab. Set the size of this new border to 4.00.
- 9 Click the Add tab again. Set the size of this new border to 1.00.
- 10 The quilt layout has been set and we are now ready to play with the blocks.

This is what the quilt layout should look like:



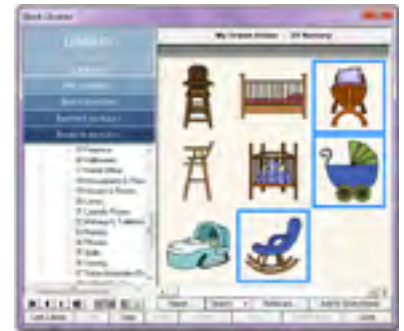
**Remember:** *After you are finished with this project, you can change the size at any time. I would recommend, though, that you set the options to resize all your blocks automatically if you decide to change the size of the quilt. For this, on the main menu click **Quilt > Options > Layout Options > All Styles**. Make sure the "Don't resize content of layers when resizing quilt" tab is unselected.*



The use of this pattern is limited to individual and personal use. Sharing or distributing this pattern in any form is not allowed. It may not be used for commercial purposes, unless written permission is granted. Credit for this pattern should be included if displayed in any manner (such as a quilt show or exhibit). Individual users may enlarge or reduce the size of the templates for their personal use, but in no other way alter them. ©Angela Padilla, 2010. All Rights Reserved.

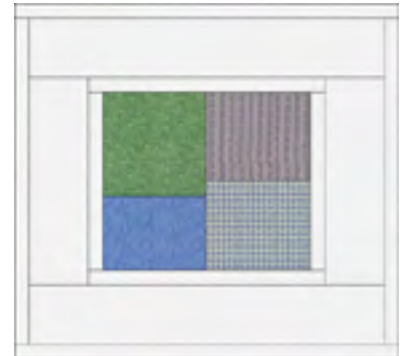
## Finding the blocks

- 1 On the main menu, click Libraries > Block Library.
- 2 Scroll down to the My Dream House Library and select: **17 Nursery**. Starting with the **Rocking Chair**, hold your Shift key down while you select that block and the next two blocks - Cradle, and Baby Carriage. click **Add to Sketchbook**.
3. Click **Close** to go back to your worktable.



## Setting the background blocks

- 1 Click the Work on Block Icon. Click Block > New Block > Easy Draw. Color the block with any fabric you like.
- 2 Click the Add to Sketchbook icon. You will be asked if you want to save a blank block. Click Yes.
- 3 Now click the Work on Quilt Icon to go back to your quilt.
- 4 On Layer 1 of your quilt worktable, click the Set Block tool and select the block you just saved.
- 5 Holding the Shift key down, click and drag to set the block on your quilt.
- 6 On the Graph Pad, set the size of this block to 7 x 7.
- 7 Copy the block three times. Set the size of the second block to 7 x 6; the third block to 7 x 5; and the fourth block to 7 x 6.
- 8 Arrange the blocks on the quilt. The first block should be placed at 0.000 x 0.000. The second block should be placed at 7.000 x 0.000. The third block should be placed at 0.000 x 7.000. And the fourth block should be placed at 7.000 x 6.000.
9. Color the blocks with the fabrics of your choice.



## Setting the applique motifs

- 1 On Layer 2 of your quilt worktable, click the Set Block tool. One by one, select the different blocks, click and drag to set them (centered) over the background blocks.
- 2 Set the size for each block: at 6.000 x 6.000.
3. Using the Text tool, write the name of the baby and date of birth, using the font of your choice.



## Borders

- 1 Back on Layer 1, color the 2 narrow borders with the fabric of your choice.
- 2 Click the Set Auto Borders Tool. From the flydown menu, select Flying Geese. Select the first border - Flying Geese.
- 3 Click on the wide middle border. The blocks will be set automatically.
4. Recolor the blocks with the fabrics of your choice.

